

Ecommerce Templates

Getting Started

Version 4.8.6 – June 2005

© Ecommerce Templates - June 2005

Getting Started

- Welcome
- Requirements
- Installing the template
- Opening the template in Dreamweaver
- Opening the template in Frontpage
- Opening the template in Adobe GoLive
- Using an FTP program to upload your store
- Using Dreamweaver to upload your store
- Publishing your store via Frontpage
- Making the database connection
 - ASP version
 - PHP version
- Files and folders

Welcome

Thank you for purchasing our ecommerce template software. Our shopping cart software is designed to get your store up and running with minimum cost and hassle whilst providing a powerful solution to your ecommerce needs.

We have tried to do as much as the work for you, through the design, payment processor integration, shipping options etc. which will leave you to personalize the store, add your categories and products and get up and selling as soon as possible.

Please take time to read through the notes provided here to get the most out of your online store.

Requirements

You will require one of the following HTML editors:

- Macromedia Dreamweaver 3, 4, MX or 2004
- Microsoft Frontpage 2000, 2002 or 2003
- Adobe GoLive 5, 6 or CS

You will need a hosting company where your store will reside; the minimum requirements are as follows:

ASP Version

- Microsoft Windows Server
- Support of ASP pages
- Database (Access)
- ASPEncrypt for offline credit card processing (optional)

PHP Version

- Unix / Linux Server
- Support PHP version 4.1 or above
- MySQL Database
- cURL component installed for UPS shipping

Installing the Template

You should have downloaded a .zip file to your hard drive following purchase; this will be the id of the template you have purchased with the .zip extension
e.g. 0003fe00bkg0021.zip

Double click on the file to unzip the content to where you would like to work from on your hard drive

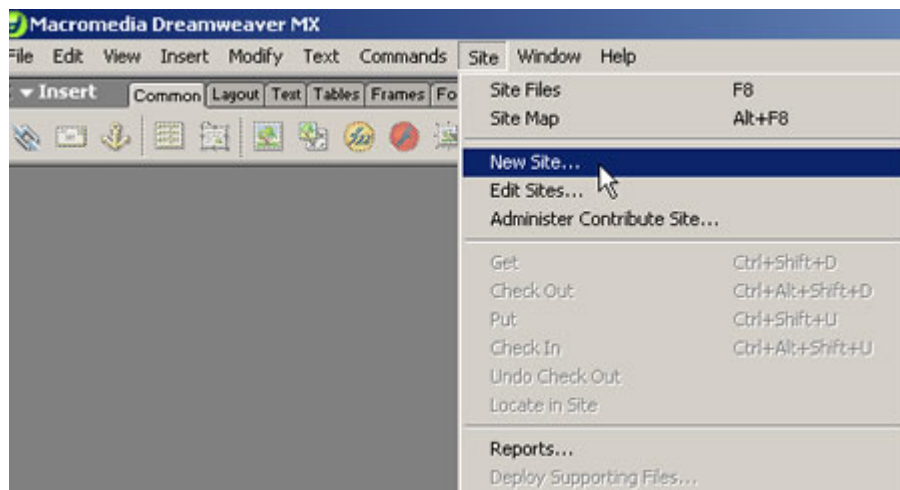
Note

We strongly recommend that you keep the .zip file in a safe place in case you need to run it again at a later date and to prevent loss of data in the event of a computer crash.

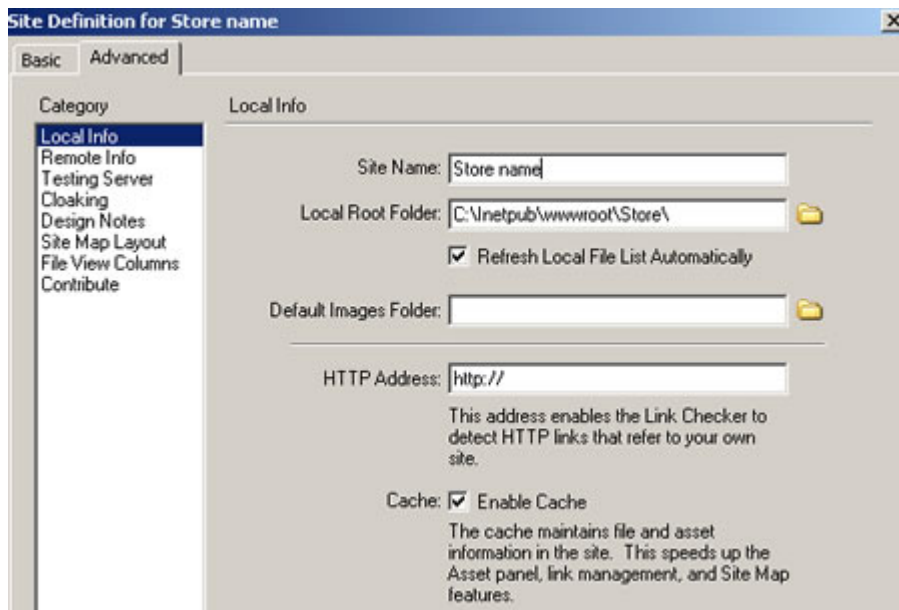
Opening the Template in Dreamweaver

In Dreamweaver you must define the site before making any changes to the template. Please note, there are slight variations between the different Dreamweaver versions, but the basic principle remains the same.

1. Open Dreamweaver
2. Select Site
3. Click on New Site



4. Ensure the **Advanced Tab** and in the **Site Name Section** give the template site a name
5. In the **Local Root Folder Section** and select the yellow folder to browse to the folder you extracted the template to.



Site Definition for Store name


Basic Advanced

Category


- Local Info
- Remote Info
- Testing Server
- Cloaking
- Design Notes
- Site Map Layout
- File View Columns
- Contribute

Local Info

Site Name: Store name

Local Root Folder: C:\inetpub\wwwroot\Store\ 

☒ Refresh Local File List Automatically

Default Images Folder: 

HTTP Address: http://

This address enables the Link Checker to detect HTTP links that refer to your own site.

Cache: ☒ Enable Cache

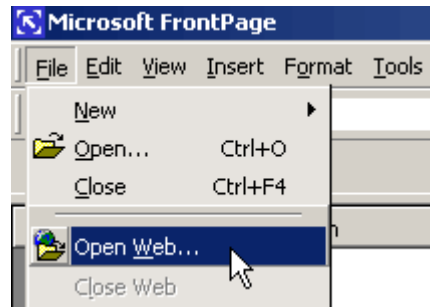
The cache maintains file and asset information in the site. This speeds up the Asset panel, link management, and Site Map features.

To get started you won't need to fill in any other information. Click on **Done**

Please see our tutorial here www.ecommercetemplates.com/tutorials/ for more help.

Opening your Template in Frontpage

1. **Open** FrontPage
2. Select **File**
3. Choose **Open Web**
4. **Browse** to the location where you extracted your ecommerce template



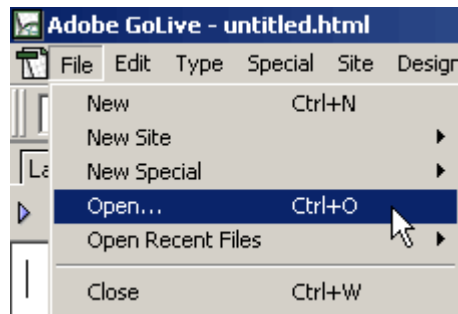
NOTE

We would strongly recommend you following the above instructions whenever you edit the template in FrontPage as this will open the complete site. If you choose File > Open, this will only open one individual file and when you make changes such as changing the location of a Hyperlink it will not establish the Cache for the whole site.

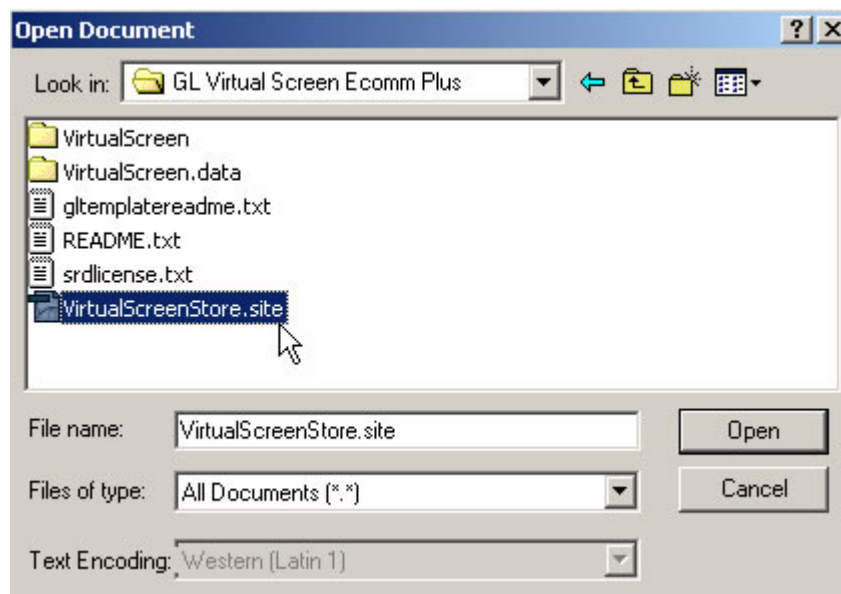
Please see our tutorial here www.ecommercetemplates.com/tutorials/ for more help.

Opening the Template in Adobe GoLive

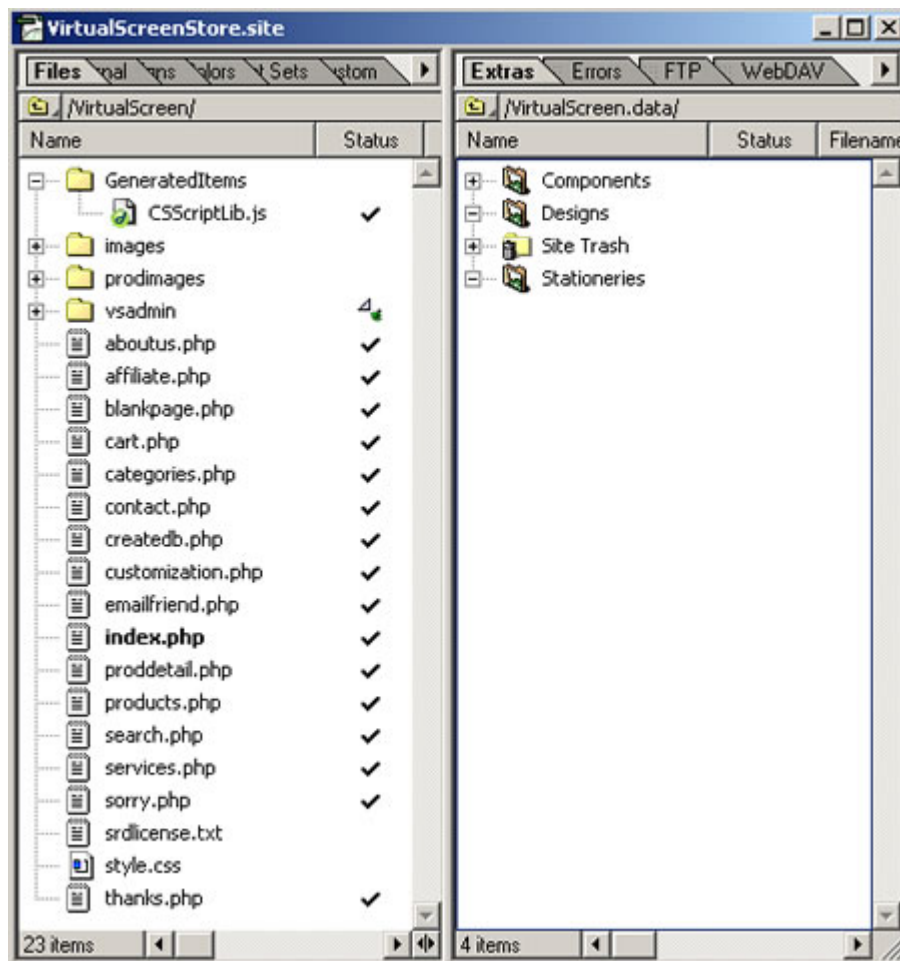
1. **Open** Adobe Golive
2. Select **File**
3. Choose **Open**
4. **Browse** to the location where you extracted your ecommerce template



5. Locate the .site file



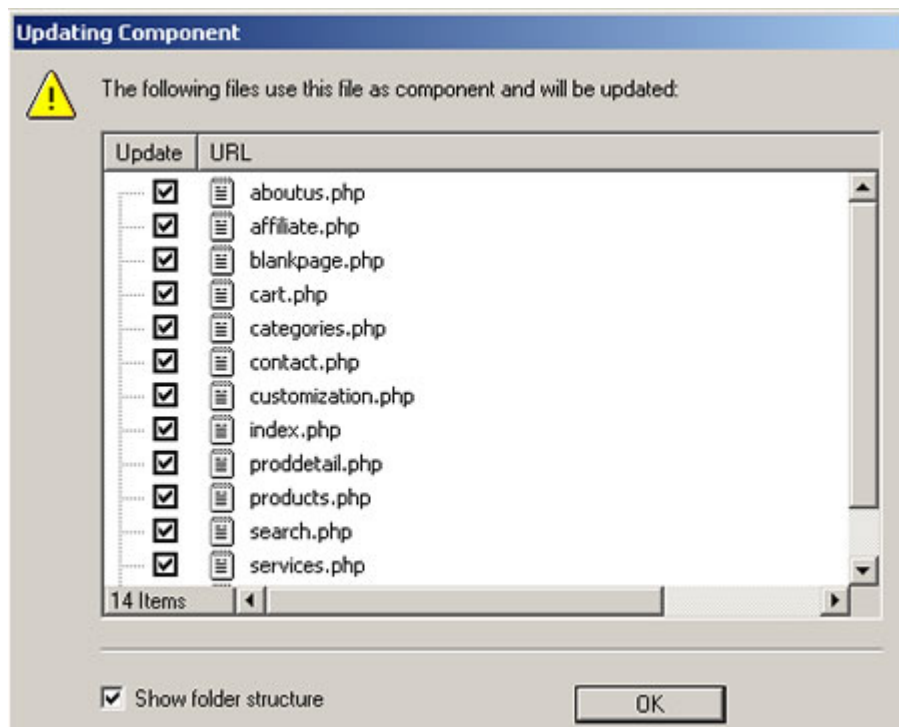
6. This will open the list of files and folders that make up your GoLive store



7. Double click on any of the file names will bring up the page in design view. Items that are repeated on several pages such as the company name, news section, menu etc. have been set up as GoLive components so the whole site can be updated from the one file. Double clicking on any of the components will bring it up for modification. Components are shown with a change in cursor:



8. After making the modifications you should be prompted to update all files that use that component



9. Agree to update all files and move on to the next one
10. To set up a new page, the easiest way is take an existing page and save it under a new name.
11. If you see the green bug icon rather than the tick next to a file in the site list then you will probably have a broken link in that file or one of the components included on that page. Bug icons in the vsadmin or inc folders can usually be ignored.

Uploading the store to your server

You may want to make some design changes before uploading the store to your host or alternatively start adding products and categories straightaway to the online admin section and leave the design elements to later.

Using an FTP program to upload your store

You may already have a FTP program installed – if not, you can download a copy from one of the popular download sites like www.download.com or www.tucows.com - search for “FTP Utility” and you’ll get a large choice of programs. Popular utilities including WS_FTP Pro and Cute FTP

Alternatively both **Dreamweaver** and **FrontPage** have their own built in FTP programmes.

- [Using Dreamweaver to upload your store](#)
- [Using Frontpage to publish your store](#)

Note.

Your hosting company should have provided you with the details for logging onto your server – the three key items are:

- **FTP address**
- **FTP user name**
- **FTP password**

With that information you should be able to connect to your server. The usual set up when using a FTP program is to have your local files on the left window and the server files on the right so you can send the files and folders from your local hard drive to your server. The hosting company will often have a number of folders already set up and you may need to check their instructions to find out where the store pages need to go but this will usually be in a folder called “htdocs” public html” or “www”

With that information you can now transfer the files from your hard drive to the host server. It is best to upload all the files and folders from your extracted template – do not upload the main folder eg. DW Virtual Tones Ecomm Plus but rather the files and folders included within that folder ie. /vsadmin/ /prodimages/ /images/ categories.asp, cart.asp etc.

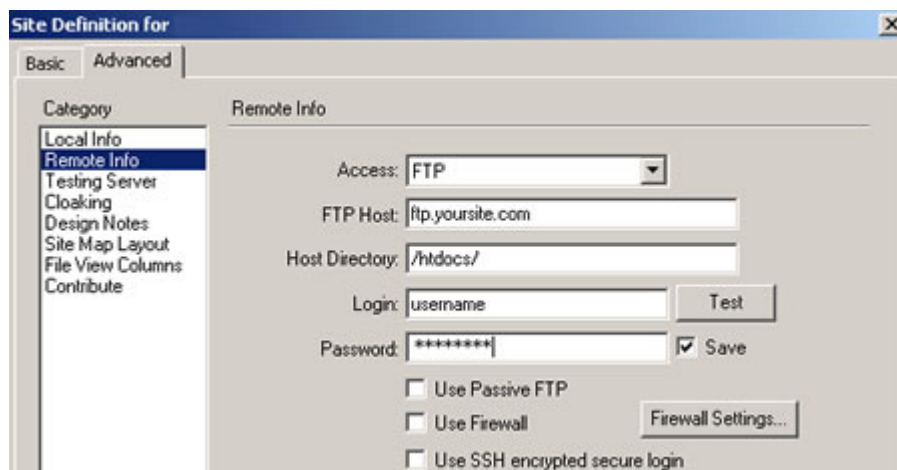
Once you have the entire site uploaded you can then go on to make your database connection and log in to the admin section.

Using Dreamweaver to Upload your Store

Dreamweaver has an inbuilt FTP utility, which you can use to upload your files and folders. When you first defined the site you may have only set up the local information. If you want to use Dreamweaver to upload your store you will need to add some details to the remote window:

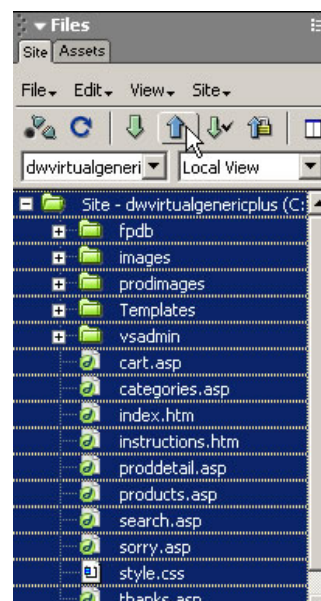
1. Select **Site**
2. Click on **Define Site**
3. **Double Click** on the **Template Site** to **Define**
4. Ensure the **Advance Tab** is selected and choose **Remote Info**
5. Enter the **Remote Host Details**
6. Select **Done** and close and dialogue boxes that may be open

Your host should have given you these details when you signed up for your hosting account. Once you have entered the information above, make sure you are connected to the internet and hit the test button to make sure your connection is correct.



7. Select **Site**
8. Choose **Site Files**
9. Select the **Put** Icon to upload all files and folders to your web host

The "Templates" folder doesn't actually have to reside on your server as it is only used for making changes locally but it won't harm anything if it is uploaded. Once you have the entire site uploaded you can then go on to make your database connection.



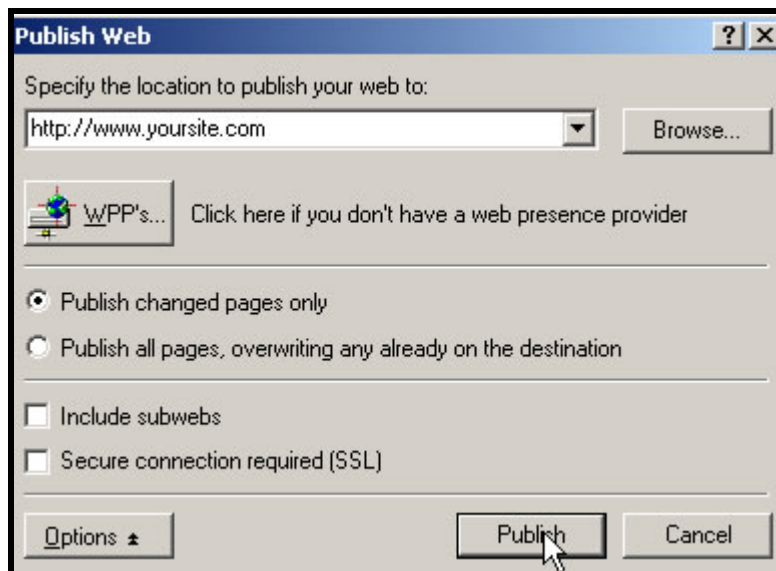
Publishing your Store via FrontPage

If you have a Frontpage version and your host has Frontpage extensions installed it is possible to use Frontpage to transfer your site from your hard drive to your server.

1. **Open** your site in FrontPage - **File > Open Web**
2. Click on the **Publish Icon**:



3. Next give the URL of the site you are publishing to:



4. And finally type in the Frontpage **Username** and **Password** that were supplied by your hosting company:



Once you have the entire site published you can then go on to make your database connection.

Making the Database Connection

There are two ways of setting the database connection depending on the type of Template you have purchased. Please choose the appropriate section to set your database connection.

- **ASP version**
- **PHP version**

Now that all the files and folders are on your host server, it's necessary to make the connection between the store and the database that dynamically generates the store functions. The set up is different for the ASP and PHP versions:

ASP Version

The easiest way to set up your connection is by preparing a quick test file and then copying the contents into your db_conn_open.asp file in the vsadmin folder - here's how to do it:

1. **Open Notepad** and **Copy** and **Paste** the following lines of code:

```
<HTML>
<BODY>
sDSN = "Provider=Microsoft.Jet.OLEDB.4.0;Data
Source=<%=server.mappath("vsproducts.mdb")%>";"
</BODY>
</HTML>
```

2. **Save** the file as **test.asp**
3. **Upload** this file to your **fpdb folder** (the one where your database resides)
4. Now **Open** this page in your browser, the URL should be something like **www.yourdomain.com/fpdb/test.asp**
5. **Copy** the contents of that page - it should look something like this

```
sDSN = "Provider=Microsoft.Jet.OLEDB.4.0;Data
Source=C:\web\database\vsproducts.mdb;"
```

6. **Open** the file **db_conn_open.asp** (located in the vsadmin folder of your template) in notepad and replace the current content with what you have copied from test.asp - just make sure that you don't delete the opening and closing **<% %>** tags so your code in db_conn_open.asp should look something like this:

```
<%  
DIM sDSN  
  
sDSN = "Provider=Microsoft.Jet.OLEDB.4.0;Data  
Source=C:\web\database\vsproducts.mdb;"  
  
%>
```

7. Upload your **new db_conn_open.asp** to your server, overwriting the original in the **vsadmin folder**

Note

That should be working fine now and you can check the connection at the following URL: **www.yourdomain.com/vsadmin/admin.asp** and you can login with the default username **mystore** and password **changeme**.

If when you login and you get a message saying your Database Connection needs to be set then try following the above steps again checking everything carefully.

If you get an error message saying that your database is not writeable then this will indicate that your connection has been set correctly but you will need to contact your host to get write permissions set to your database folder.

We would also recommend making a back up of the db_conn_open.asp file just in case it gets overwritten at any time.

Important

The folder where the database resides should be non-browseable. This means that nobody will be able to download your database by typing in **www.yourstore.com/fpdb/vsproducts.mdb** - it's worth running a check. If you can download the database then ask your host if there is a special folder under the root of the site where your database can be placed, if they can set non-browseable permissions on the database folder, or in Frontpage, right click the database folder, choose properties and uncheck the "allow files to be browsed" box.

PHP Version

To set the database connection, open the file **vsadmin/db_conn_open.php** in a text editor such as **Notepad**. You need to fill in the details in the spaces provided. The 4 pieces of information that you need to provide are the **username** and **password** for database access, the **name of the database** and the **address of the database**. If you are in any doubt about these, please ask your host who will provide you with the information. Then fill in the gaps between the quotes as shown.

```
$db_username = "loginname"; // Your database login username  
$db_password = "loginpassword"; // Your database login password  
$db_name = "databasename"; // The name of the database you wish to use  
$db_host = "localhost";
```

The last parameter **\$db_host** is normally **"localhost"**. However, it can also be a URL like

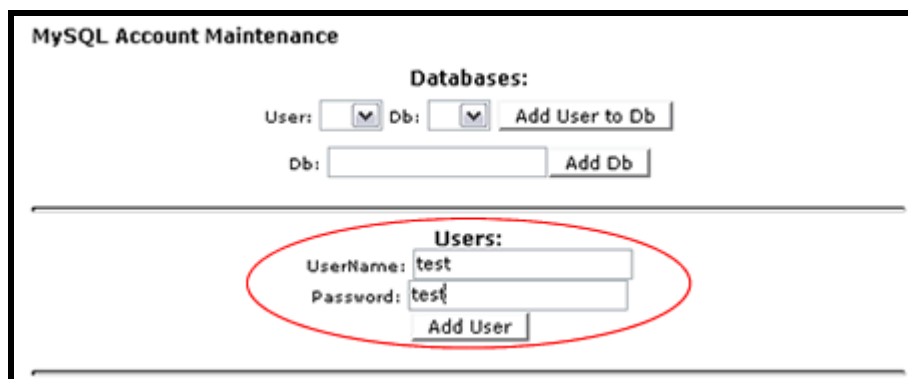
```
$db_host = "db.myhost.com";
```

You host should have given you access to a hosting control panel where, amongst other things, you can set up the **mySQL database connection**. Here's an example using "cpanel"


1. **Log** into to your hosting control panel, this will typically be the URL **www.yoursite.com/admin/** or **www.yoursite.com/cpanel/** and after entering your username and password you should see a screen with the mySQL icon:



2. Click there and choose your **user name and password**, then click **"Add User"**

A screenshot of the "MySQL Account Maintenance" interface. It has a title bar at the top. Below it, there's a section labeled "Databases:" with two dropdown menus for "User:" and "Db:", and an "Add User to Db" button. Below that is a "Db:" text input field and an "Add Db" button. A horizontal line separates this from the "Users:" section. In the "Users:" section, there are two text input fields: "UserName:" with the value "test" and "Password:" with the value "test". Below these is an "Add User" button. A red oval is drawn around the "UserName:" and "Password:" fields and the "Add User" button.

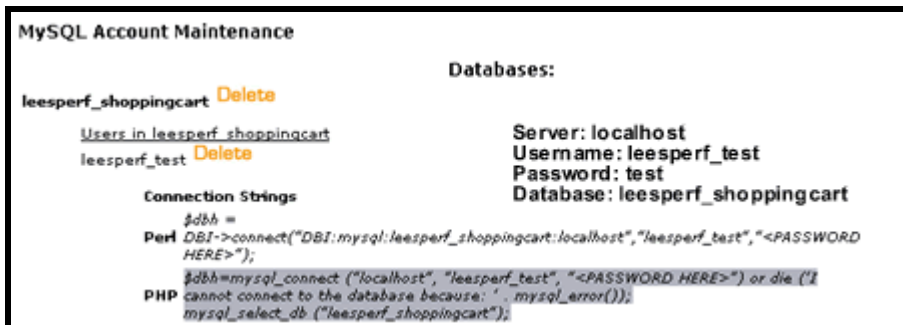
- When the screen refreshes you'll need to give your database a name and click on **Add db**:



- Finally **choose the database** you have just set up from the **drop down** and choose **"Add User to Db"**



- You will then be presented with details of your connection string that you can **copy** and **paste** into **db_conn_open.php**.



```

Connection Strings
$dbh =
Perl DBI->connect("DBI:mysql:leesperf_shoppingcart:localhost","leesperf_test","<PASSWORD HERE>");
$dbh=mysql_connect ("localhost", "leesperf_test", "<PASSWORD HERE>") or die ("I
PHP cannot connect to the database because: ", mysql_error());
mysql_select_db ("leesperf_shoppingcart");
  
```

Note

Make sure you include the **underscore** in your user name and database name

- Upload** the **db_conn_open.php** and **replace the file** in your **vsadmin** directory

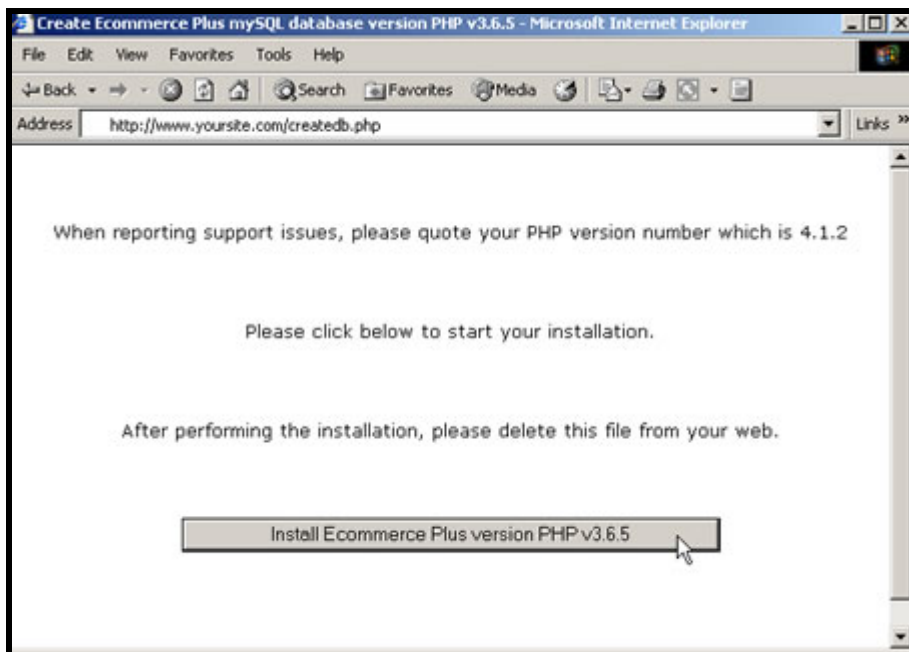
Once this information has been correctly entered and uploaded, you can **install the database tables and data**.

7. To do this, just open the file **createdb.php** in a browser by entering the address for instance:

<http://www.yoursite.com/createdb.php>

Replacing "www.yoursite.com" with whatever is the URL of your site.

The following screen will appear, please see following page:



8. Then click on the button to **Install Ecommerce Plus** and your database will be created. Please remember to delete this file from your web after running it, as otherwise others could use it to destroy your information.

The store should be working fine now and you can check it at:

www.yourdomain.com/vsadmin/admin.php and you can login with the default user name **mystore** and password changeme.

Please view our tutorial at www.ecommercetemplates.com/tutorials/ for further help.

Files and folders

Now the store is on the server it may be an idea to become familiar with the files and folders that make up the store itself. Below is an overview of what each folder includes and its function:

Fpdb: This is where your database resides. *(ASP version only)*

Images: This folder contains all the graphics that are used in the design of the site – it should also contain a folder called “extras”, where you can find the .png files and/or blank graphics.

Prodimages: This is the default folder for placing your product images. You’ll see that at the beginning it contains the dozen or so images used in the default store.

Vsadmin: This is where all the admin pages, scripts and images are kept. You don’t need to make any design changes here but there a couple of files that you may need to edit once you have all the files published to your server.

Includes: This folder contains the include pages. If you’re not familiar with includes, these are files that are used on several or all of the pages on the store – updating these pages will cause all pages that “include” them to be updated at the same time. They are typically news sections, headers, menu and footers. *(Frontpage only)*

Templates: This folder should contain the .dwt file, usually called Main.dwt. This is where you should make the global changes to your site. Once you've made the changes to this file, save it and you'll be prompted if you want to update all the files using this template - agree to the prompt and you should be able to see the modifications you've made on subsequent pages. *(Dreamweaver only)*

Library: Some of the templates use library items for the news sections or menus. These can be inserted or deleted from the editable sections and like the .dwt file, any changes made to the .lbi file will be made on all the pages containing the library item on saving. *(Dreamweaver only)*

The other files are the ones that make up the site and store itself and will have a .html, .php or .asp extension.

© Copyright [Ecommerce Templates](#) June 2005

This package must not be photocopied, reproduced, transmitted in any form or by any means without the prior written permission of the copyright owner. All requests for permission should be sent to [Ecommerce Templates](#).